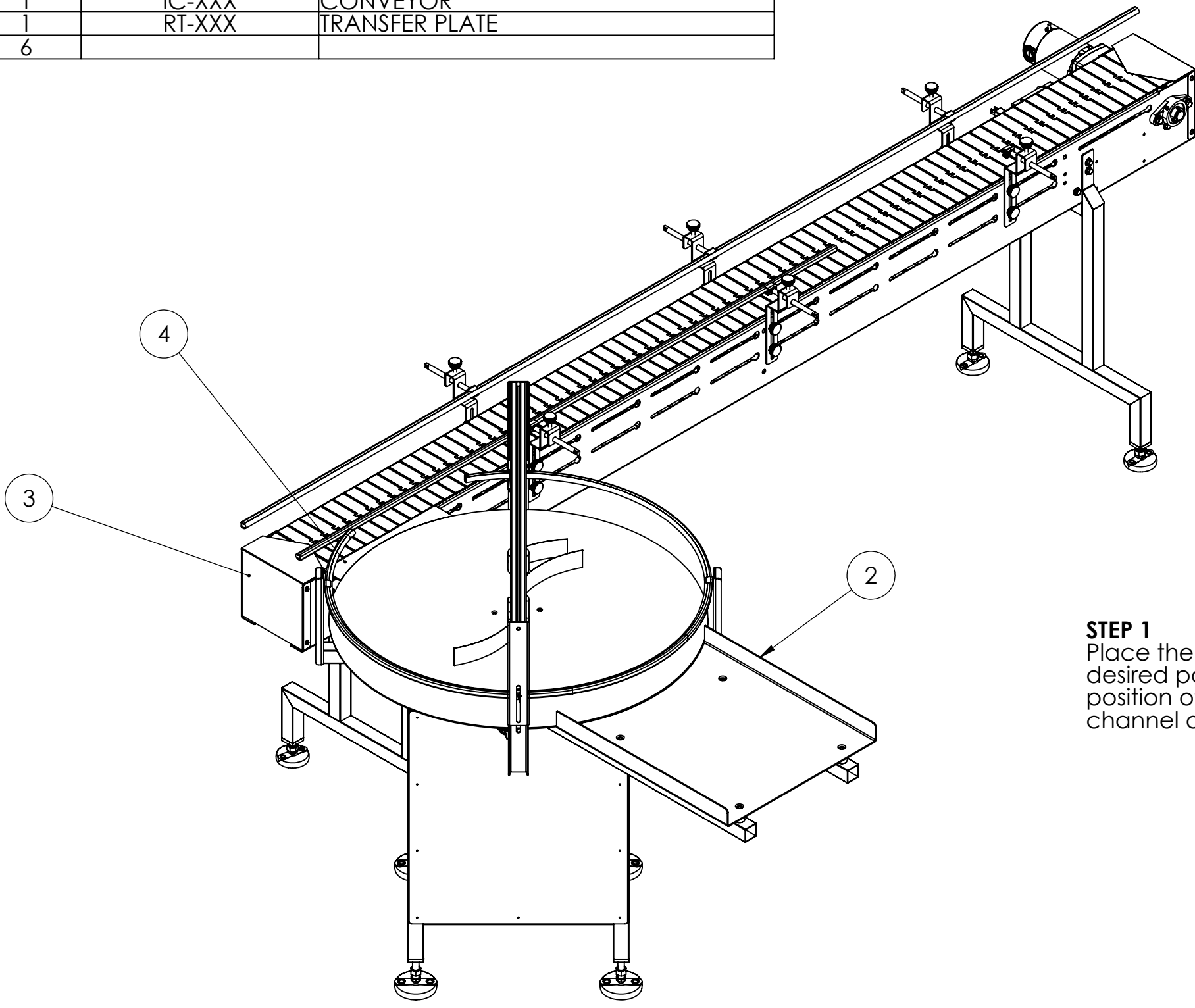


ASSEMBLY BILL OF MATERIALS			
ITEM	Default/ QTY.	PartNo	Description
1	1	TR-XXX	TABLE TO CONVEYOR TRANSFER GATE
2	1	RT-XXX	ROTARY TABLE
3	1	IC-XXX	CONVEYOR
4	1	RT-XXX	TRANSFER PLATE
6	6		



STEP 1
Place the Rotary Table (2) in the desired position and mark the position of the transfer plate in the channel of the conveyor

C:\Users\veguzi\Globalteck Conveyors Dropbox\Veronica Guzzo\GLOBAL ENGINEERING DRIVE (1)\MARKETING\EASY INSTALL GUIDES\ROTARY TABLE-TRANSFER PLATE INSTALL GUIDE\WORKING FILES

PROPRIETARY PROPERTY
THIS DRAWING AND INFORMATION CONTAINED THERON IS EXCLUSIVE PROPERTY OF GLOBAL PLASTICS & MACHINERY. MIAMI, FL. USA. OWNER RESERVES THE RIGHT TO RECALL DRAWING UPON DEMAND AND TO COLLECT DAMAGES FOR MISUSE OF ITS PROPRIETARY INFORMATION.

THIS DRAWING IS THE PROPERTY OF GLOBAL PLASTICS & MACHINERY. AND NOT TO BE USED IN ANY WAY WITHOUT THE EXPRESS WRITTEN CONSENT OF GLOBAL PLASTICS & MACHINERY.

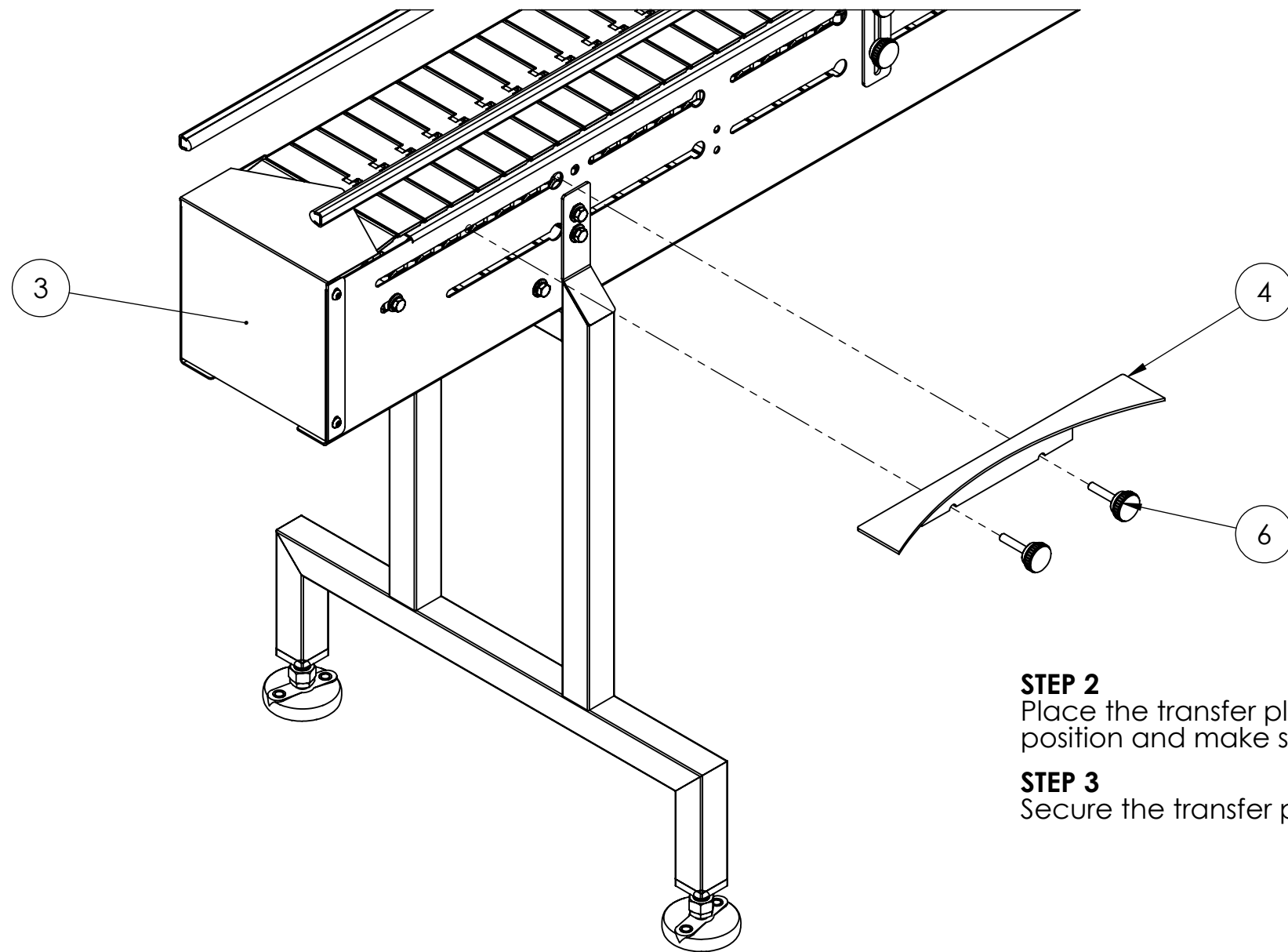
GLOBALTEK
7354 NW 35 ST. Miami, FL 33122
PH: (305) 418-9632 Fax: (305) 704-8099

PROJECT			
PART NAME			
MACHINE MODEL			
DWG NO.			REV -
DESIGN	DRAWN	DATE 12/14/2021	SHEET 1 OF 7

C:\Users\veguzi\Global\Engineering Drive (1)\MARKETING\EASY INSTALL GUIDES\ROTARY TABLE-TRANSFER PLATE INSTALL GUIDE\WORKING FILES

ASSEMBLY BILL OF MATERIALS

ITEM	Default/ QTY.	PartNo	Description
1	1	TR-XXX	TABLE TO CONVEYOR TRANSFER GATE
2	1	RT-XXX	ROTARY TABLE
3	1	IC-XXX	CONVEYOR
4	1	RT-XXX	TRANSFER PLATE
6	6	KNOB	



- STEP 2**
Place the transfer plate (4) in the marked position and make sure is leveled with the conveyor chain.
- STEP 3**
Secure the transfer plate (4) using the knobs (6).

PROJECT

PROPRIETARY PROPERTY
THIS DRAWING AND INFORMATION CONTAINED THERON IS EXCLUSIVE PROPERTY OF GLOBAL PLASTICS & MACHINERY. MIAMI, FL. USA. OWNER RESERVES THE RIGHT TO RECALL DRAWING UPON DEMAND AND TO COLLECT DAMAGES FOR MISUSE OF ITS PROPRIETARY INFORMATION.

THIS DRAWING IS THE PROPERTY OF GLOBAL PLASTICS & MACHINERY. AND NOT TO BE USED IN ANY WAY WITHOUT THE EXPRESS WRITTEN CONSENT OF GLOBAL PLASTICS & MACHINERY.

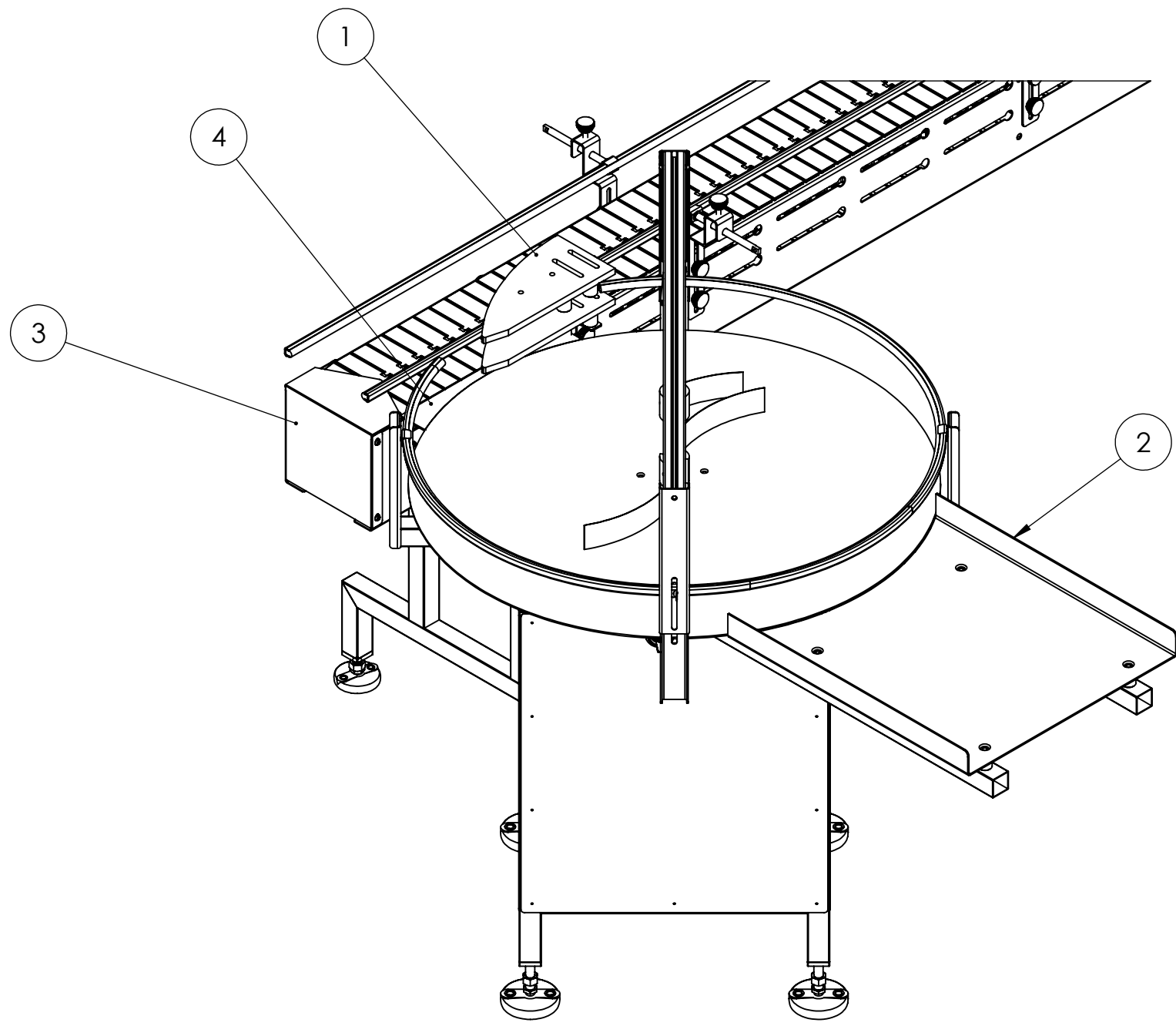


7354 NW 35 ST. Miami, FL 33122
PH: (305) 418-9632 Fax: (305) 704-8099

PART NAME			
MACHINE MODEL			
DWG NO.			REV -
DESIGN	DRAWN	DATE 12/14/2021	SHEET 2 OF 7

ASSEMBLY BILL OF MATERIALS

ITEM	Default/ QTY.	PartNo	Description
1	1	TR-XXX	TABLE TO CONVEYOR TRANSFER GATE
2	1	RT-XXX	ROTARY TABLE
3	1	IC-XXX	CONVEYOR
4	1	RT-XXX	TRANSFER PLATE
6	6	KNOBS	



STEP 4
Place the Transfer Gate (1) inside plates in the desired position and mark the position in the channel of the conveyor

C:\Users\veguzi\Globaltekt\Conveyors\Dropbox\Veronica Guzzo\GLOBAL ENGINEERING DRIVE (1)\MARKETING\EASY INSTALL GUIDES\ROTARY TABLE-TRANSFER PLATE INSTALL GUIDE\WORKING FILES

PROJECT

PROPRIETARY PROPERTY
THIS DRAWING AND INFORMATION CONTAINED THERON IS EXCLUSIVE PROPERTY OF GLOBAL PLASTICS & MACHINERY. MIAMI, FL. USA. OWNER RESERVES THE RIGHT TO RECALL DRAWING UPON DEMAND AND TO COLLECT DAMAGES FOR MISUSE OF ITS PROPRIETARY INFORMATION.

THIS DRAWING IS THE PROPERTY OF GLOBAL PLASTICS & MACHINERY. AND NOT TO BE USED IN ANY WAY WITHOUT THE EXPRESS WRITTEN CONSENT OF GLOBAL PLASTICS & MACHINERY.

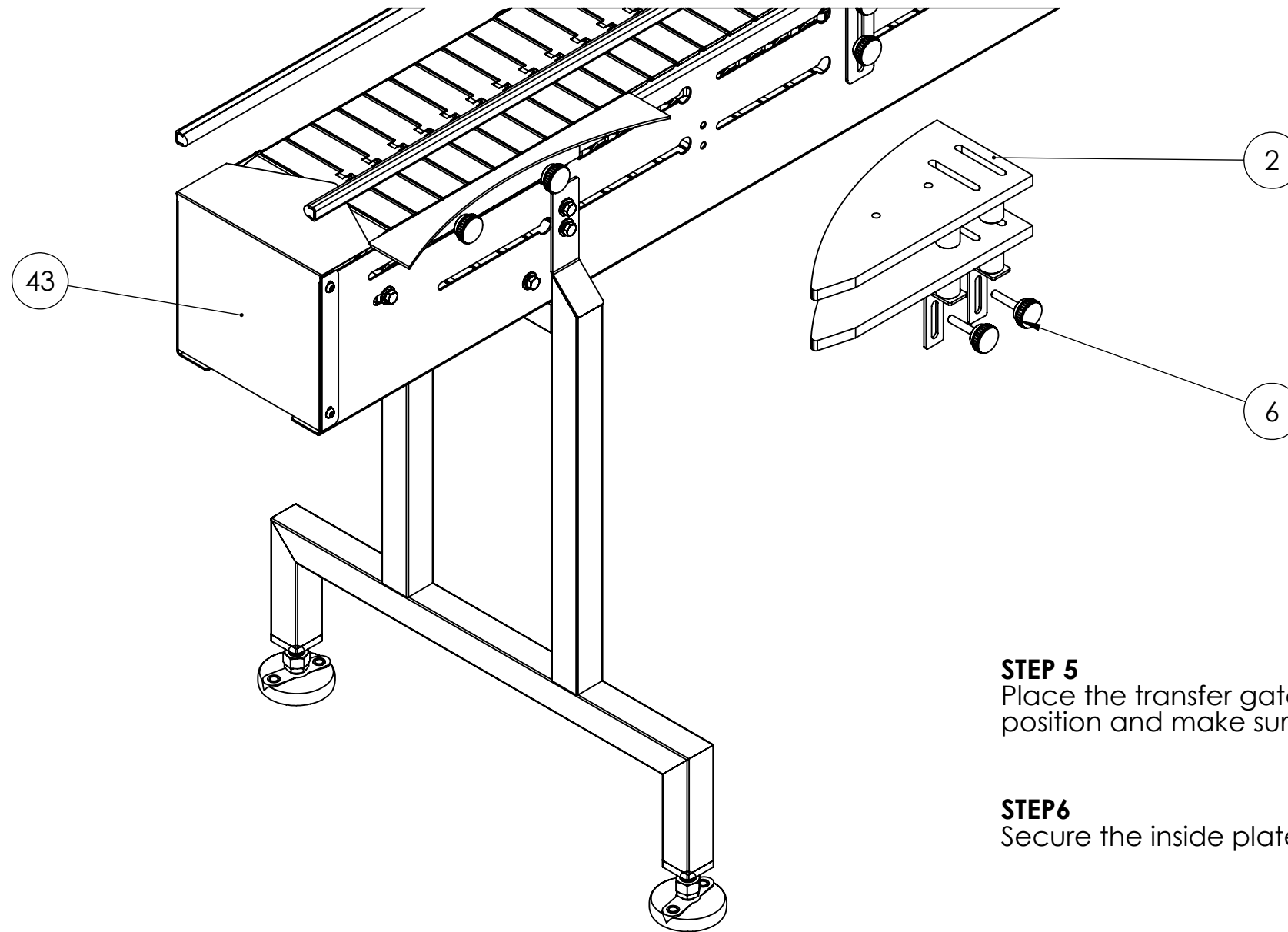


7354 NW 35 ST. Miami, FL 33122
PH: (305) 418-9632 Fax: (305) 704-8099

PART NAME			
MACHINE MODEL			
DWG NO.			REV -
DESIGN	DRAWN	DATE 12/14/2021	SHEET 3 OF 7

C:\Users\veguzi\Global\Engineering Drive (1)\MARKETING\EASY INSTALL GUIDES\ROTARY TABLE-TRANSFER PLATE INSTALL GUIDE\WORKING FILES

ASSEMBLY BILL OF MATERIALS			
ITEM	Default/ QTY.	PartNo	Description
1	1	TR-XXX	TABLE TO CONVEYOR TRANSFER GATE
2	1	RT-XXX	ROTARY TABLE
3	1	IC-XXX	CONVEYOR
4	1	RT-XXX	TRANSFER PLATE
6	6	KNOBS	



STEP 5

Place the transfer gate (1) inside plates in the marked position and make sure is leveled with the conveyor chain.

STEP 6

Secure the inside plates of the transfer gate(1) using the knobs (6).

PROPRIETARY PROPERTY
THIS DRAWING AND INFORMATION CONTAINED THERON IS EXCLUSIVE PROPERTY OF GLOBAL PLASTICS & MACHINERY. MIAMI, FL. USA. OWNER RESERVES THE RIGHT TO RECALL DRAWING UPON DEMAND AND TO COLLECT DAMAGES FOR MISUSE OF ITS PROPRIETARY INFORMATION.

THIS DRAWING IS THE PROPERTY OF GLOBAL PLASTICS & MACHINERY. AND NOT TO BE USED IN ANY WAY WITHOUT THE EXPRESS WRITTEN CONSENT OF GLOBAL PLASTICS & MACHINERY.

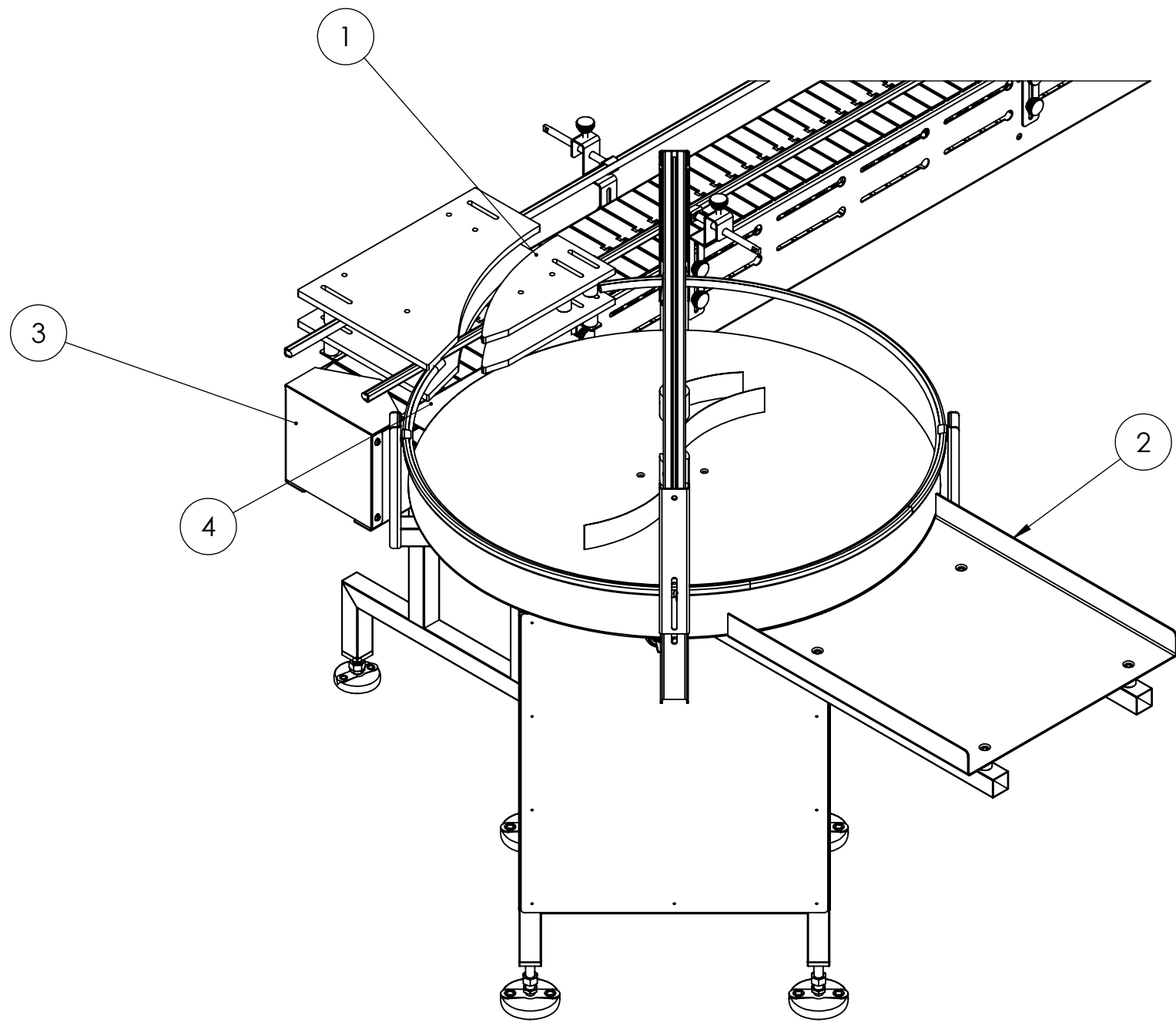


7354 NW 35 ST. Miami, FL 33122
PH: (305) 418-9632 Fax: (305) 704-8099

PART NAME			
MACHINE MODEL			
DWG NO.			REV -
DESIGN	DRAWN	DATE 12/14/2021	SHEET 4 OF 7

PROJECT

ASSEMBLY BILL OF MATERIALS			
ITEM	Default/ QTY.	PartNo	Description
1	1	TR-XXX	TABLE TO CONVEYOR TRANSFER GATE
2	1	RT-XXX	ROTARY TABLE
3	1	IC-XXX	CONVEYOR
4	1	RT-XXX	TRANSFER PLATE
6	6	KNOBS	



STEP 7
Place the outside plate of the Transfer Gate (1) in the desired position and mark the position in the channel of the conveyor

C:\Users\veguzi\Globalteck Conveyors Dropbox\Veronica Guzzo\GLOBAL ENGINEERING DRIVE (1)\MARKETING\EASY INSTALL GUIDES\ROTARY TABLE-TRANSFER PLATE INSTALL GUIDE\WORKING FILES

PROPRIETARY PROPERTY
THIS DRAWING AND INFORMATION CONTAINED THERON IS EXCLUSIVE PROPERTY OF GLOBAL PLASTICS & MACHINERY. MIAMI, FL. USA. OWNER RESERVES THE RIGHT TO RECALL DRAWING UPON DEMAND AND TO COLLECT DAMAGES FOR MISUSE OF ITS PROPRIETARY INFORMATION.

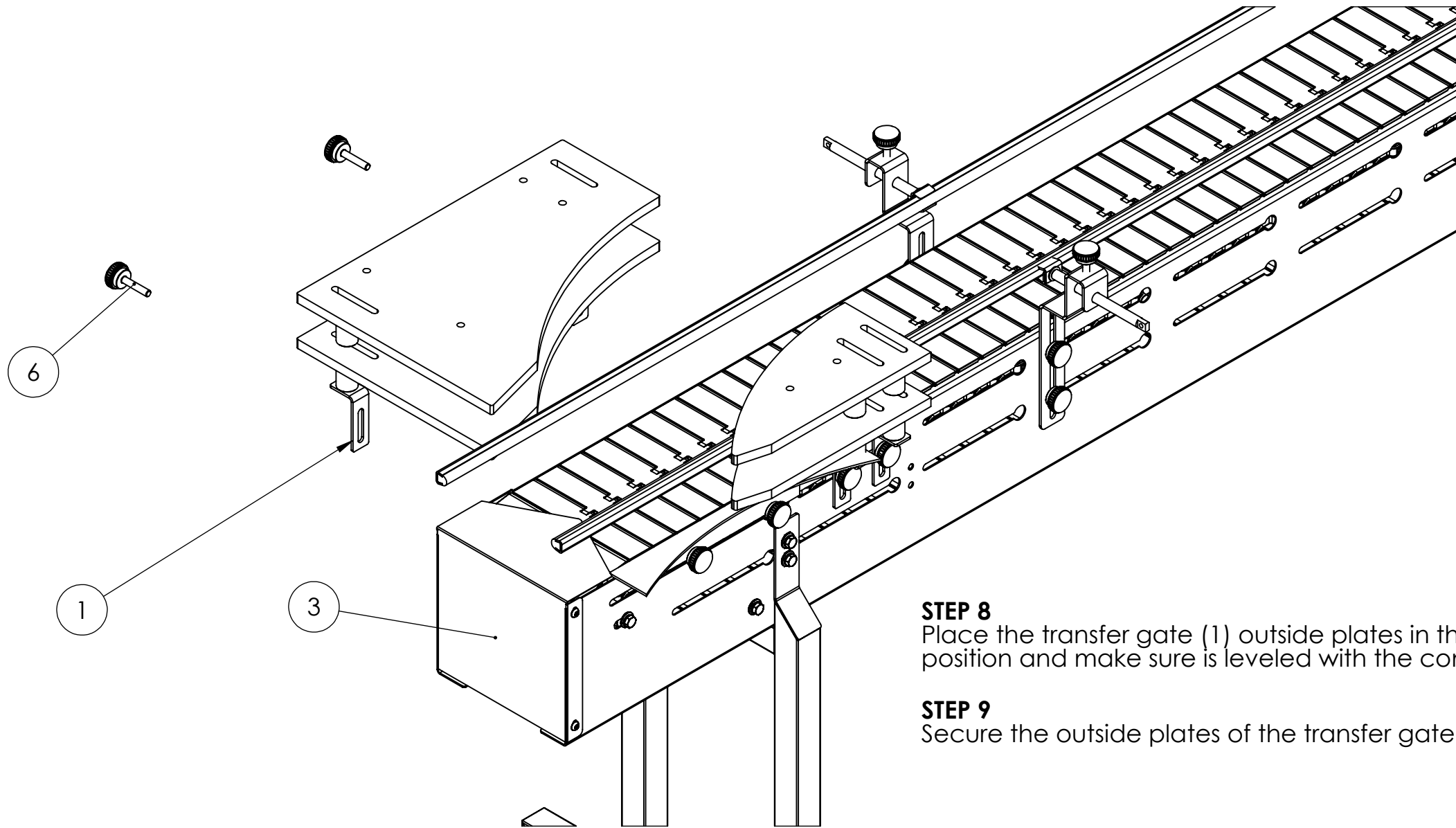
THIS DRAWING IS THE PROPERTY OF GLOBAL PLASTICS & MACHINERY. AND NOT TO BE USED IN ANY WAY WITHOUT THE EXPRESS WRITTEN CONSENT OF GLOBAL PLASTICS & MACHINERY.

GLOBALTEK
7354 NW 35 ST. Miami, FL 33122
PH: (305) 418-9632 Fax: (305) 704-8099

PROJECT			
PART NAME			
MACHINE MODEL			
DWG NO.			REV -
DESIGN	DRAWN	DATE 12/14/2021	SHEET 5 OF 7

C:\Users\veguzi\Global\Engineering Drive (1)\MARKETING\EASY INSTALL GUIDES\ROTARY TABLE-TRANSFER PLATE INSTALL GUIDE\WORKING FILES

ASSEMBLY BILL OF MATERIALS			
ITEM	Default/ QTY.	PartNo	Description
1	1	TR-XXX	TABLE TO CONVEYOR TRANSFER GATE
2	1	RT-XXX	ROTARY TABLE
3	1	IC-XXX	CONVEYOR
4	1	RT-XXX	TRANSFER PLATE
6	6	KNOBS	



STEP 8
Place the transfer gate (1) outside plates in the marked position and make sure is leveled with the conveyor chain.

STEP 9
Secure the outside plates of the transfer gate(1) using the knobs (6).

PROJECT

PROPRIETARY PROPERTY
THIS DRAWING AND INFORMATION CONTAINED THERON IS EXCLUSIVE PROPERTY OF GLOBAL PLASTICS & MACHINERY. MIAMI, FL. USA. OWNER RESERVES THE RIGHT TO RECALL DRAWING UPON DEMAND AND TO COLLECT DAMAGES FOR MISUSE OF ITS PROPRIETARY INFORMATION.

THIS DRAWING IS THE PROPERTY OF GLOBAL PLASTICS & MACHINERY. AND NOT TO BE USED IN ANY WAY WITHOUT THE EXPRESS WRITTEN CONSENT OF GLOBAL PLASTICS & MACHINERY.

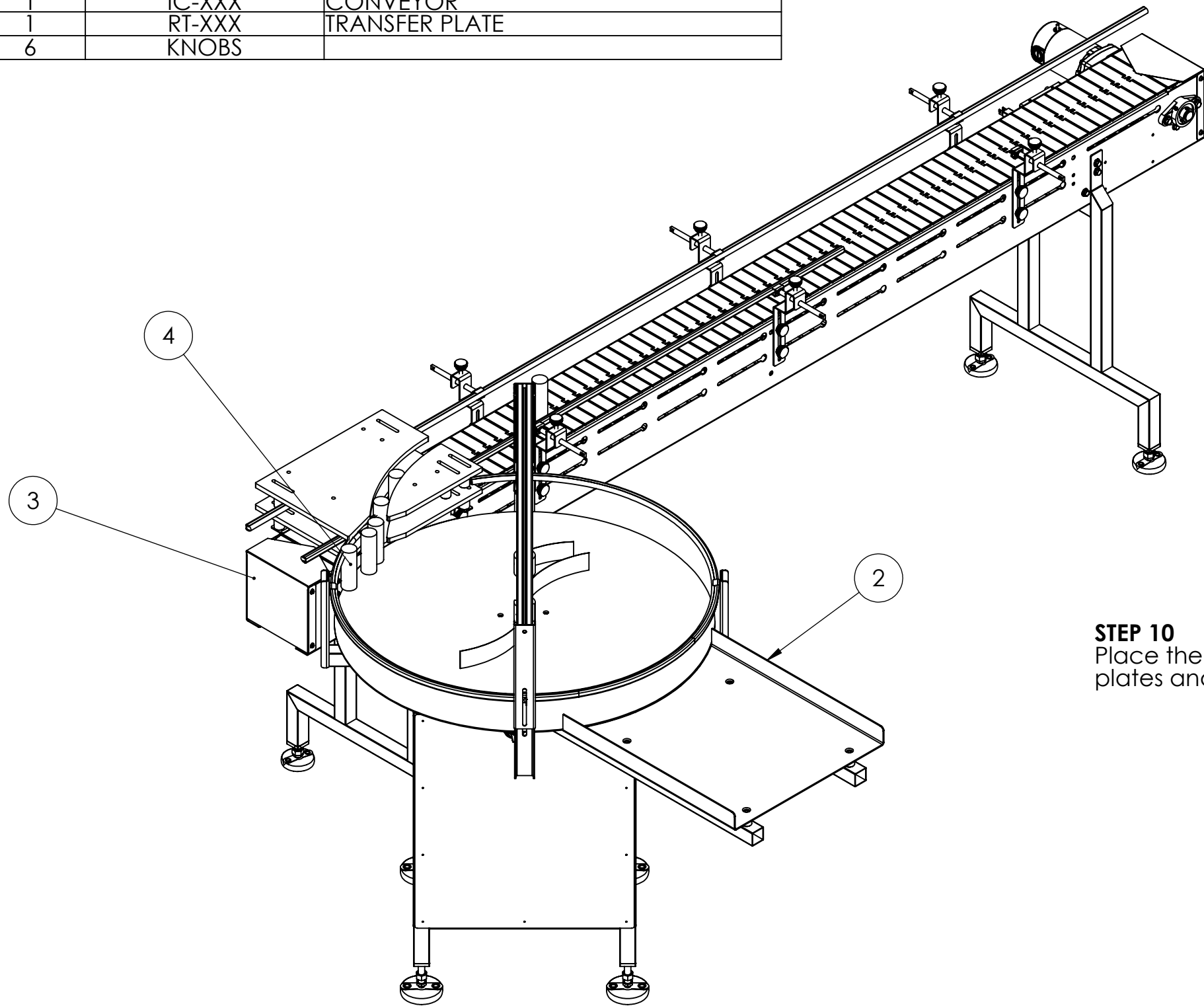


7354 NW 35 ST. Miami, FL 33122
PH: (305) 418-9632 Fax: (305) 704-8099

PART NAME			
MACHINE MODEL			
DWG NO.			REV -
DESIGN	DRAWN	DATE 12/14/2021	SHEET 6 OF 7

ASSEMBLY BILL OF MATERIALS

ITEM	Default/ QTY.	PartNo	Description
1	1	TR-XXX	TABLE TO CONVEYOR TRANSFER GATE
2	1	RT-XXX	ROTARY TABLE
3	1	IC-XXX	CONVEYOR
4	1	RT-XXX	TRANSFER PLATE
6	6	KNOBS	



STEP 10
Place the product between the transfer gate plates and adjust as needed

C:\Users\veguzi\Globaltekt\Conveyors\Dropbox\Veronica Guzzo\GLOBAL ENGINEERING DRIVE (1)\MARKETING\EASY INSTALL GUIDES\ROTARY TABLE-TRANSFER PLATE-INSTALL GUIDE\WORKING FILES

PROJECT

PROPRIETARY PROPERTY
THIS DRAWING AND INFORMATION CONTAINED THERON IS EXCLUSIVE PROPERTY OF GLOBAL PLASTICS & MACHINERY. MIAMI, FL. USA. OWNER RESERVES THE RIGHT TO RECALL DRAWING UPON DEMAND AND TO COLLECT DAMAGES FOR MISUSE OF ITS PROPRIETARY INFORMATION.

THIS DRAWING IS THE PROPERTY OF GLOBAL PLASTICS & MACHINERY. AND NOT TO BE USED IN ANY WAY WITHOUT THE EXPRESS WRITTEN CONSENT OF GLOBAL PLASTICS & MACHINERY.



7354 NW 35 ST. Miami, FL 33122
PH: (305) 418-9632 Fax: (305) 704-8099

PART NAME			
MACHINE MODEL			
DWG NO.			REV -
DESIGN	DRAWN	DATE 12/14/2021	SHEET 7 OF 7